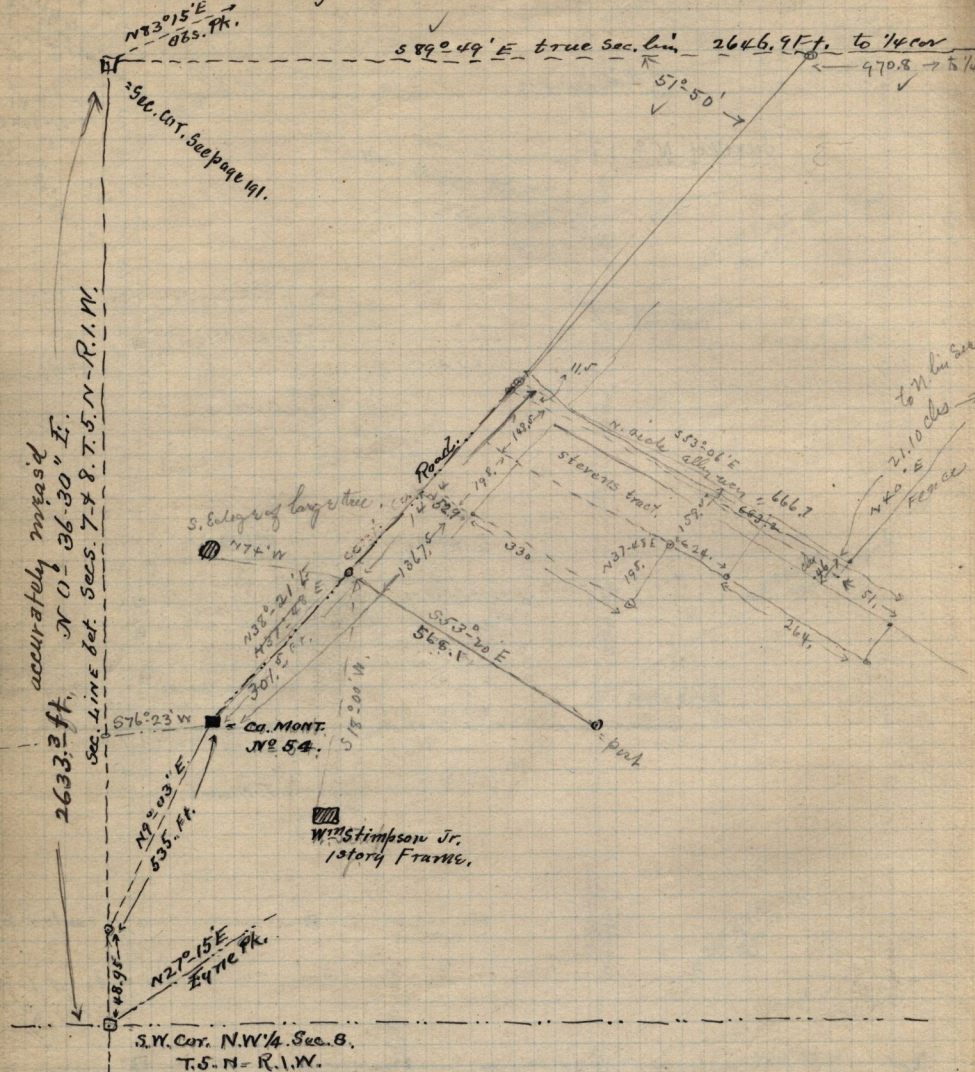


Feb. 27th 1896.
Survey made for Wm Stimpson, in Riverdale
22 N. W 1/4 of Sec. 8. T. 5. N. R. 1. W.



See page 179-174-176

description given to Wm Stimpson jr Pt N.W. 1/4 Sec. 8. T. 5. N. R. 1. W.
 1896, 178 ft N. of S.W. cor. of 1/4 Sec. - N 67° 50' E. 788.2 Ft. N 53° 20'
 568.1 ft. to cent. st. S 38° 21' W. 301.5 ft. along cent. st. to Ca. Mt.
 576° 23' W. 80 ft. more or less. to sec. line S 377. ft more or
 less to Crq. Rob. Stimpson 970.8 ft. N 74° 49' W. along
 Sec. line 1048.52 ft S 38° 21' W. from th. E. cor. of 1/4 Sec. to
 S 38° 21' W. 198 ft. S 53° 04' E. 396.84 ft. N 38° 21' E. 198 ft. N 53°
 W. 396.84 ft. to Crq. Ann R. Spaulding - frag. 2.05 chs W. a
 21.56 chs S 40° W. from th. E. cor. of 1/4 Sec. N 53° 04' W. 3.34 chs
 S 38° 21' W. 2.14 chs. S 53° 04' E. 7.37 chs. N 36° E. 2.09 chs
 N 52° 15' W. 3.94 chs to Crq. 1.5 ch.